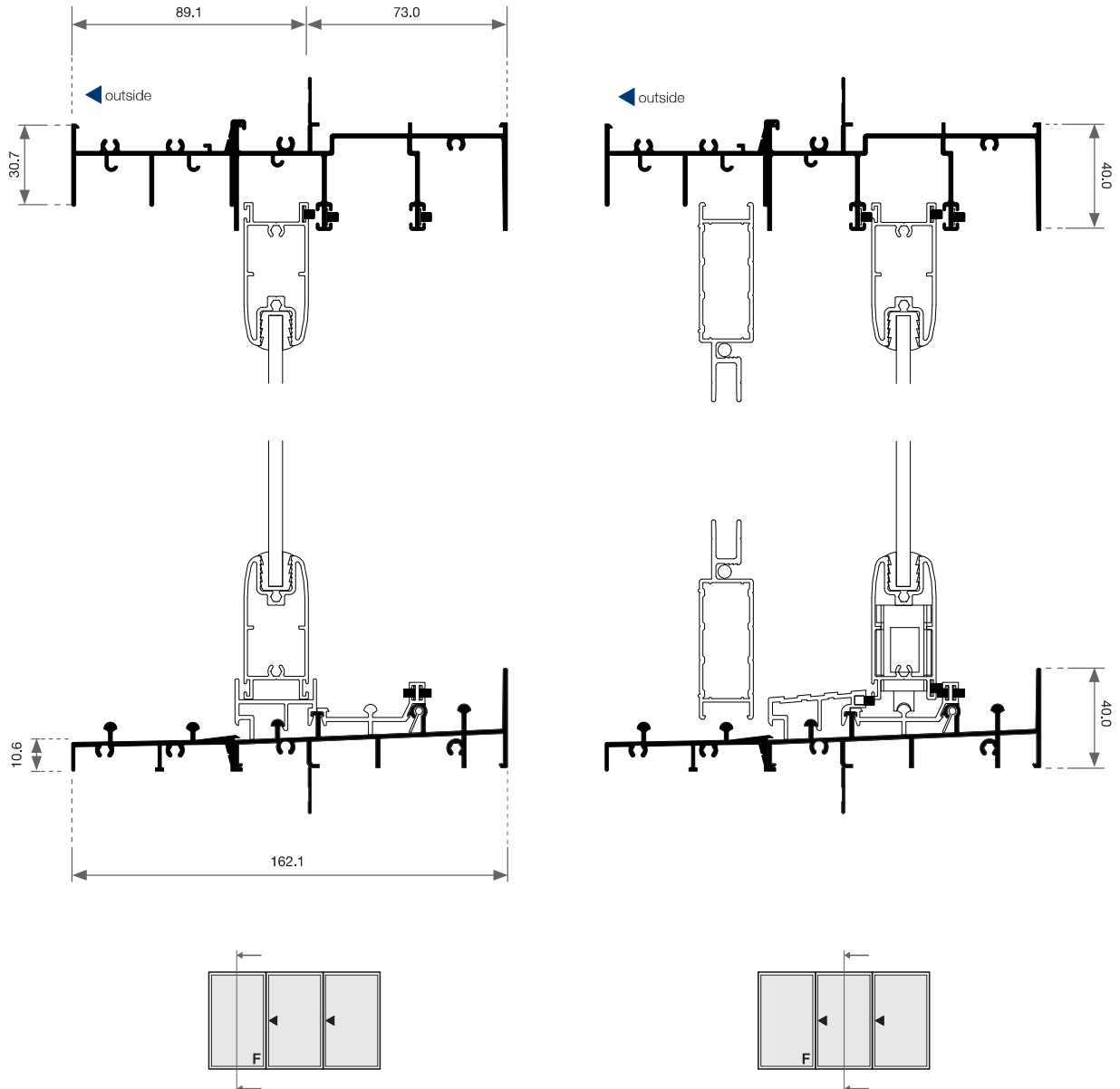


Sliding Stacker Door - Cross Sectional View

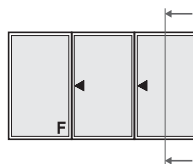
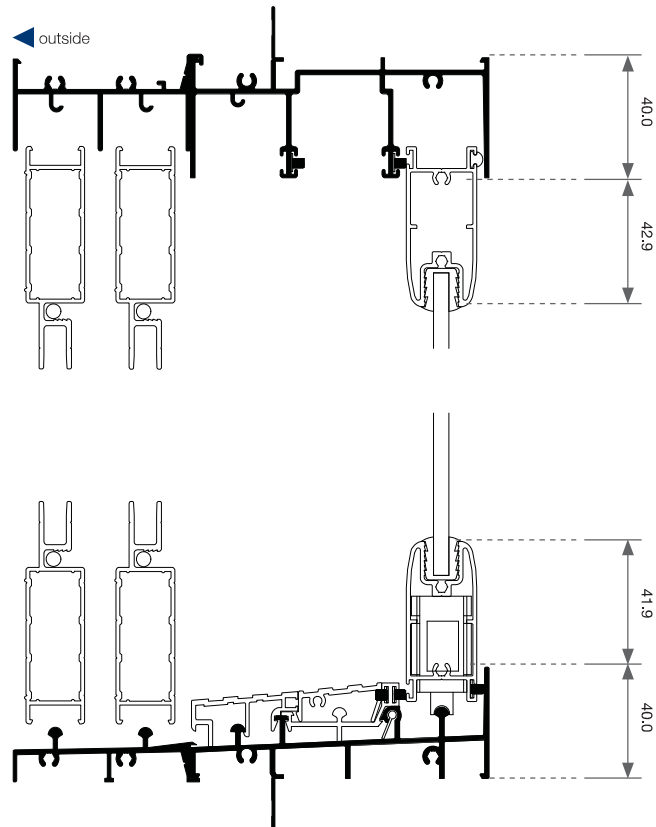
Three Panel | FXX





Sliding Stacker Door - Cross Sectional View

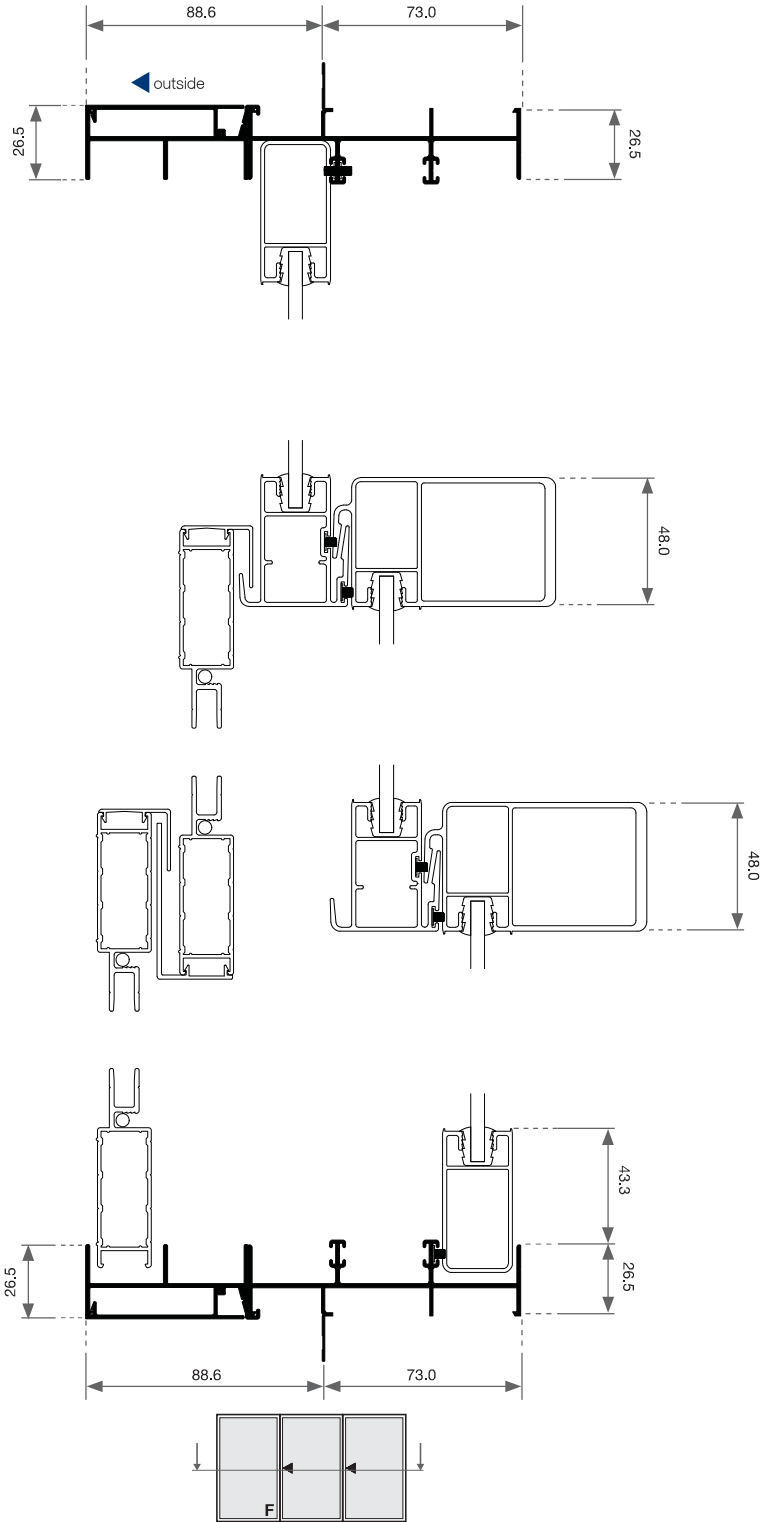
Three Panel | FXX



Please note that drawings displayed are not to scale

Sliding Stacker Door - Cross Sectional View

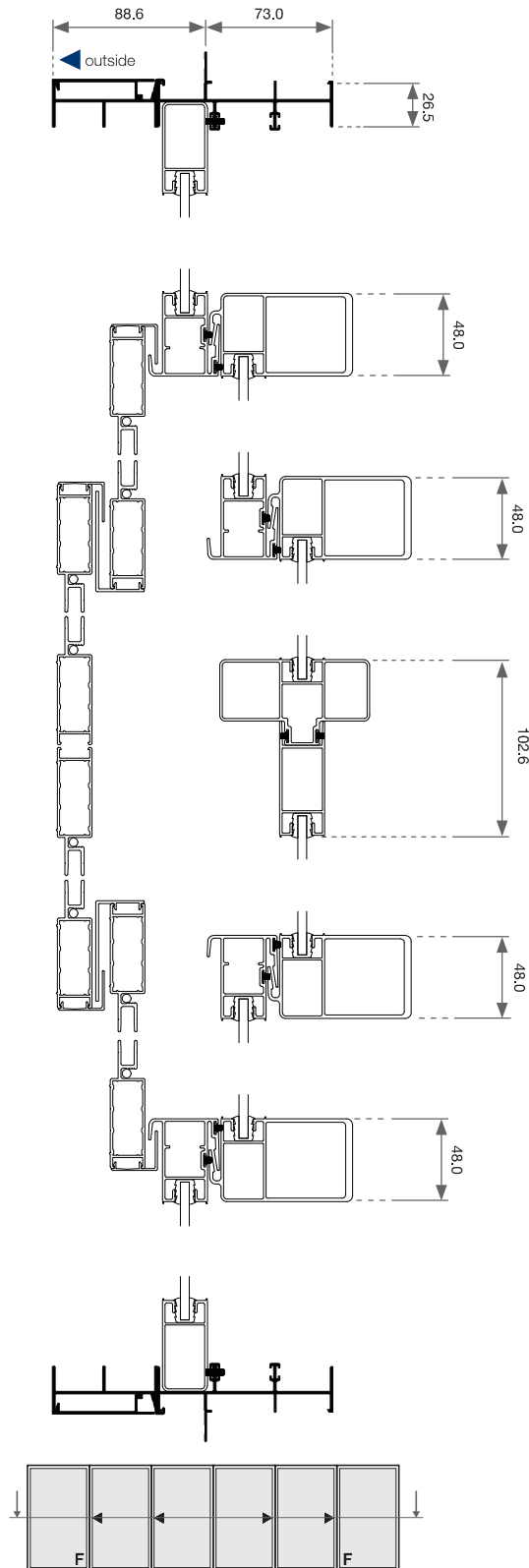
Three Panel | FXX





Sliding Stacker Door - Cross Sectional View

Six Panel | FXXXXF

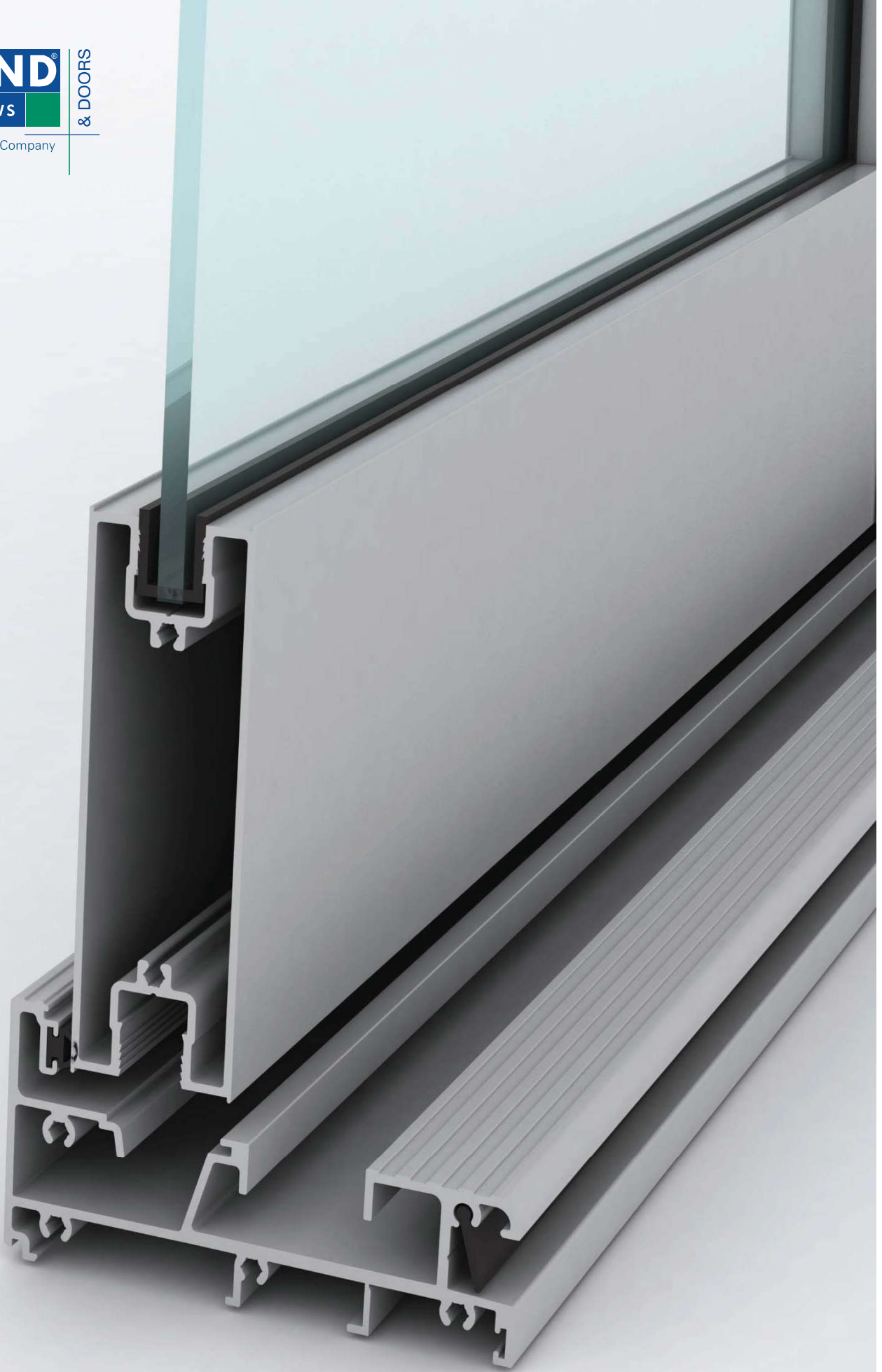


Please note that drawings displayed are not to scale

TREND[®]
WINDOWS

& DOORS

A JELD-WEN Company





Quantum[®] Bifold Door Features & Benefits

Bifold Door - Features & Benefits

FRAME

- Robust 102mm semi commercial aluminium door frame.

PANEL

- 62mm door sash stile
- Durable bifold panels.
- Individual panels can measure up to 2400mm high and 900mm wide. (Note: 2700mm high in Heavy Duty panel and 1000mm wide is available)
- Sash punched holes are fitted with infill caps.
 *Panels configure to open out only.

SILL

- If no sill is required option is available for clear alfresco walkway.*

**No sill option does not meet water and wind requirements.*

GLAZING & ENERGY EFFICIENCY

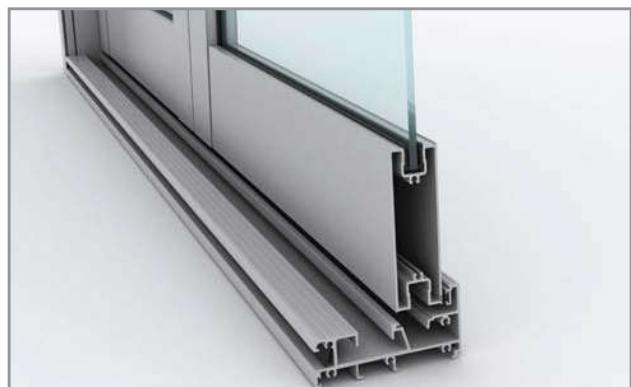
- All Trend® Windows and Doors comply with Australian Standards AS1288.
- Glazing options from 4mm single glazed to 18mm insulated glazed units (IGUs) .
- Available in a range of glazing option.
- Energy efficiency options available to help reduce home energy consumption.
- All glazing options are Window Energy Rating Scheme (WERS) rated - providing a wide range of energy efficient solutions.

ACOUSTICS

- Acoustic solutions available for improved noise reduction.
- High R_w ratings available .

WIND & WATER RATINGS

- All Trend® Windows and Doors are designed to meet and surpass 700Pa wind velocity rating and 150Pa water penetration rating and comply with Australian Standards AS2047.
- Pascal deflection rates up to 2200Pa.
- Bifold door rated at an air infiltration of 0.67L/s m².





Bifold Door - Features & Benefits

SECURITY

- **Infinity** night latch key lock hardware supplied as standard
- Mortice lock mechanism pulls the door panels in tight in the center, top and bottom locking the doors securely.

BUSHFIRE

- Xtreme® Bushfire Protection option is available**.
- Xtreme® options have been tested by CSIRO to meet BAL-40 - compliant to AS1530.8.1 within Australian Standards AS3959-2009.



**Max door width for bushfire zones is 2400mm



HARDWARE

- **Infinity** Satin Chrome hardware supplied as standard.
- **Infinity** bifold lock include night latch feature - locking doors when handle is in vertical position.
- Optional colours are available:
 - Pearl White
 - Stone Beige
 - Anodic Natural Matt
 - Gloss Black
- Door locks can be keyed alike to other Quantum® door products for ease of use.
- Hinges made out of durable stainless steel - optional black color is also available.



OPTIONS

- Glazing options also available in bar layout styles:
 - Colonial
 - Federation
 - Ovolo glazing bar style*
- Wide range of powder coating colours.
- Customised WERS ratings.
- Variety of sizes and custom made options available.
- Variety of configuration options available.

* Ovolo only available in single glazing.



DELIVERY

- Protective wrapping for delivery to site comes standard for all Quantum® products.